

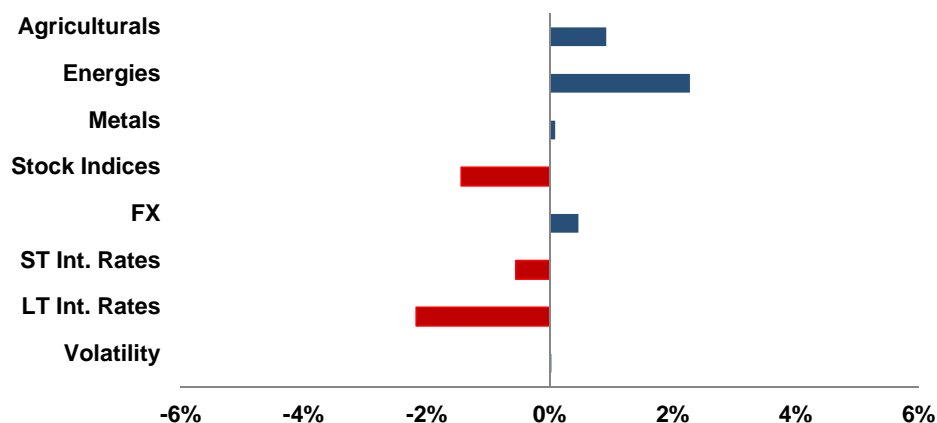
MARCH 2018

Month Return: **-0.38%**

Year to Date Return: **-11.38%**

Program Assets: **\$612 m**

MONTHLY GROSS RETURN ATTRIBUTION



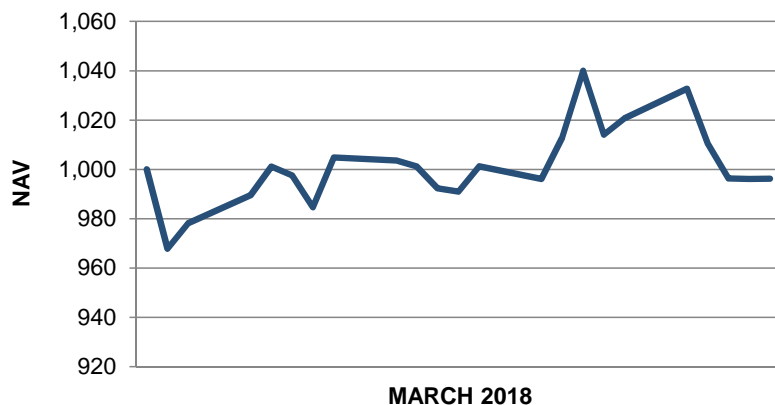
WINNERS

- BRENT CRUDE
- MEXICAN PESO
- SUGAR
- COFFEE
- GASOIL

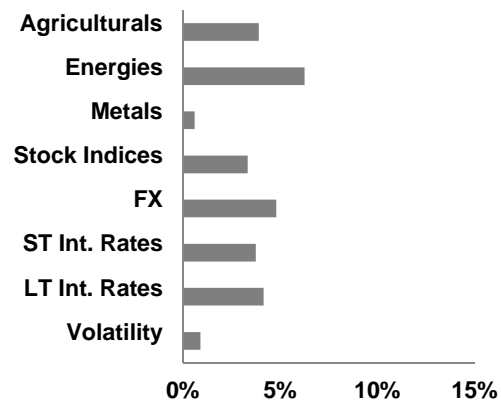
LOSERS

- UK GILT (10 YR)
- US T NOTE (5 YR)
- ALL ORDINARY
- EURO BOBL
- US T NOTE (10 YR)

NET PERFORMANCE FOR THE MONTH



AVERAGE MONTHLY VALUE AT RISK FOR MONTH



SENSITIVITY ANALYSIS

Stock Indices Drop 1%: **-0.52%**
 Energies Drops 1%: **-0.78%**
 Bonds Yields Increase 10bp: **3.12%**
 Dollar Index Drops 1%: **1.31%**

RISK OVERVIEW AT END OF MONTH

One Day VaR at 99% Confidence: **3.38%**
 Margin to Equity: **18.85%**

PAST PERFORMANCE IS NOT NECESSARILY INDICATIVE OF FUTURE RESULTS
 This Program is available only to Qualified Eligible Participants as defined by CFTC Regulation 4.7.

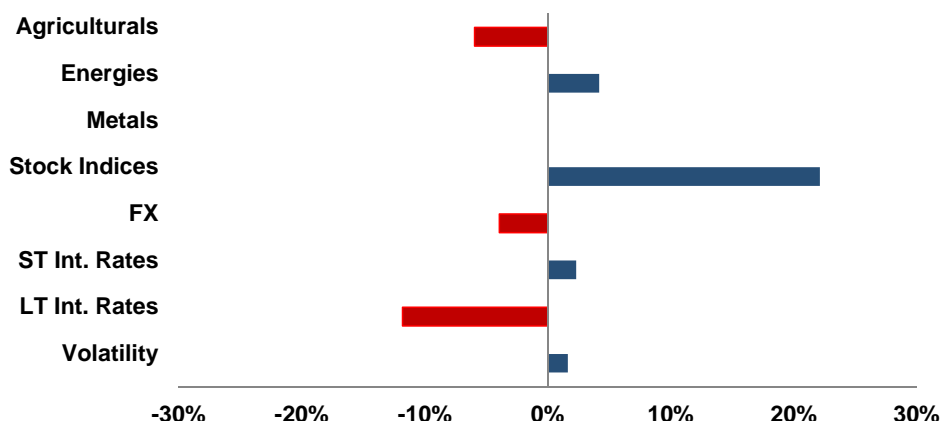
MARCH 2018

12 Mo. Return: 3.40%

12 Mo. Volatility: 28.85%

12 Mo. Largest Drawdown: -19.96%

LAST 12 MONTHS GROSS RETURN ATTRIBUTION



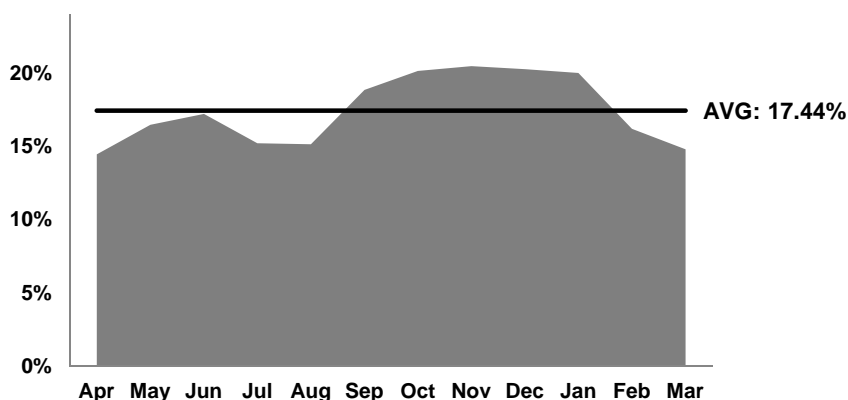
WINNERS

- DOW JONES INDEX
- HANG SENG INDEX
- S & P 500 INDEX
- TOPPIX INDEX
- NIKKEI INDEX

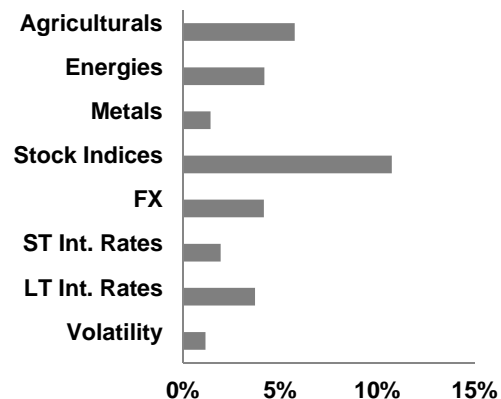
LOSERS

- UK GILT (10 YR)
- EURO BUND
- CANADIAN DOLLAR
- BOT WHEAT
- US T BOND (30 YR)

AVERAGE MONTHLY VALUE AT RISK (12 MONTHS)



AVERAGE MONTHLY VALUE AT RISK (12 MONTHS)



PERFORMANCE STATISTICS (60 MONTHS)

Total Return: 71%
 Compounded Annual Return: 11%
 Sharpe Ratio: 0.58
 Correlation to S&P: 18%
 Correlation to Barclay CTA Index: 83%
 Correlation to HFR FoF Index: 27%

PERFORMANCE STATISTICS (60 MONTHS)

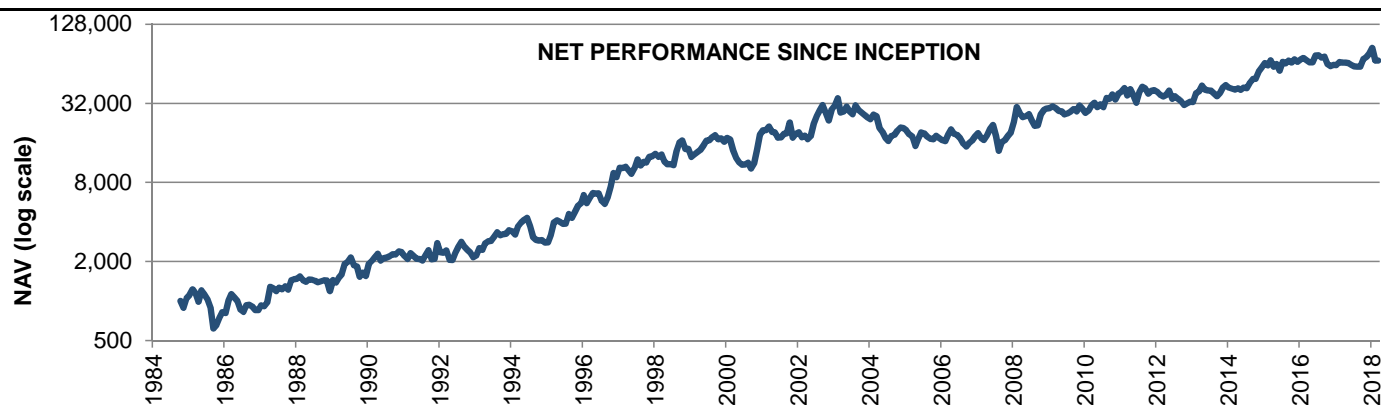
% Winning Months: 50%
 % Losing Months: 50%
 Average Monthly Gain: 6.3%
 Average Monthly Loss: -4.0%
 ODR (Avg. Win/Avg Loss): 1.56
 Max Drawdown: -20.0%

PAST PERFORMANCE IS NOT NECESSARILY INDICATIVE OF FUTURE RESULTS
 This Program is available only to Qualified Eligible Participants as defined by CFTC Regulation 4.7.

Return since Inception: **6,660%**

Comp. Ann. Return since Inception: **13.44%**

Firm Assets: **\$1101 m**



NET MONTHLY RETURNS (%)

| | Jan | Feb | Mar | Apr | May | Jun | Jul | Aug | Sep | Oct | Nov | Dec | YEAR |
|------|--------|--------|--------|--------|--------|--------|--------|--------|--------|--------|--------|--------|--------|
| 2018 | 10.72 | -19.66 | -0.38 | | | | | | | | | | -11.38 |
| 2017 | -0.51 | 5.87 | -0.94 | -0.29 | -0.74 | -3.14 | -2.54 | -0.48 | 0.23 | 14.11 | 3.38 | 6.14 | 21.74 |
| 2016 | 4.16 | 2.52 | -4.04 | -3.38 | 0.16 | 12.42 | 0.38 | -3.54 | 1.46 | -12.18 | -3.72 | 2.17 | -5.39 |
| 2015 | 8.52 | -3.87 | 9.30 | -10.78 | 4.65 | -10.72 | 16.60 | -2.41 | 4.97 | -3.85 | 6.10 | -4.24 | 10.92 |
| 2014 | -4.35 | -1.76 | -1.91 | 2.23 | -2.33 | 4.04 | -1.12 | 9.83 | 7.04 | 0.22 | 13.43 | 7.22 | 35.65 |
| 2013 | -0.23 | 16.79 | 3.22 | 10.59 | -6.67 | -1.66 | -0.45 | -4.81 | -4.56 | 5.81 | 10.00 | 4.40 | 34.16 |
| 2012 | -3.10 | -4.96 | -2.96 | 2.77 | 7.69 | -13.23 | 4.53 | -4.17 | -4.37 | -6.59 | 3.23 | 2.64 | -18.62 |
| 2011 | 3.69 | 6.17 | -12.06 | 11.78 | -10.05 | -12.59 | 19.93 | 10.40 | -2.64 | -9.00 | 5.26 | 1.25 | 6.36 |
| 2010 | -6.61 | 3.97 | 9.83 | 4.22 | -7.26 | 5.02 | -4.39 | 16.96 | -1.44 | 8.22 | -8.73 | 10.95 | 30.75 |
| 2009 | 0.89 | 3.07 | -3.05 | -4.65 | -1.08 | -4.98 | 1.84 | 3.16 | 4.54 | -4.14 | 11.00 | -5.84 | -0.58 |
| 2008 | 19.94 | 29.55 | -10.13 | -6.55 | 1.67 | 3.56 | -10.18 | -9.26 | 1.02 | 21.09 | 7.77 | 2.59 | 51.45 |
| 2007 | 6.21 | -8.30 | -3.36 | 8.22 | 11.77 | 7.39 | -17.75 | -22.63 | 16.90 | 3.00 | 7.78 | 6.55 | 7.60 |
| 2006 | -3.63 | -1.37 | 12.42 | 9.38 | -7.78 | -1.63 | -5.69 | -8.76 | -5.22 | 5.93 | 4.33 | 7.86 | 3.08 |
| 2005 | -4.09 | -6.72 | -4.04 | -15.01 | 13.03 | 12.23 | -1.89 | -5.46 | -3.51 | -0.94 | 6.00 | -3.88 | -16.41 |
| 2004 | -2.86 | 8.38 | -2.90 | -18.35 | -6.84 | -9.86 | -5.16 | 9.29 | 1.58 | 7.93 | 5.32 | -0.69 | -16.68 |
| 2003 | 6.94 | 13.83 | -22.44 | 1.57 | 9.45 | -8.07 | -4.75 | 16.70 | -7.63 | -4.23 | -4.45 | -4.47 | -13.41 |
| 2002 | 3.03 | -8.07 | 2.39 | -5.71 | 5.41 | 24.24 | 14.82 | 10.50 | 9.10 | -12.27 | -12.70 | 21.34 | 54.06 |
| 2001 | 7.72 | 0.55 | 6.26 | -8.96 | -0.91 | -8.31 | 0.09 | 6.47 | 1.13 | 20.74 | -23.52 | 6.73 | 1.10 |
| 2000 | 6.85 | -2.94 | -17.34 | -12.36 | -7.59 | -3.95 | 0.56 | 3.29 | -9.70 | 9.12 | 28.04 | 29.39 | 13.08 |
| 1999 | -13.18 | 3.91 | 4.22 | 4.09 | 7.63 | 9.61 | 0.52 | 5.77 | 3.60 | -7.01 | 1.35 | -5.44 | 13.34 |
| 1998 | 4.25 | -5.30 | 3.99 | -11.05 | -4.76 | -0.38 | -1.37 | 27.51 | 16.18 | 3.79 | -13.72 | 0.32 | 13.72 |
| 1997 | 17.83 | -0.15 | 2.21 | -6.47 | -5.88 | 10.38 | 16.84 | -10.21 | 6.45 | -0.64 | 9.82 | 1.55 | 44.60 |
| 1996 | 15.78 | -13.33 | 9.55 | 9.17 | -1.18 | 0.60 | -12.40 | -5.20 | 12.55 | 20.28 | 26.94 | -7.09 | 58.21 |
| 1995 | 0.49 | 13.71 | 24.41 | 3.80 | -2.60 | -3.59 | 0.63 | 18.46 | -6.52 | 10.82 | 11.16 | 4.44 | 98.69 |
| 1994 | -1.71 | -5.34 | 14.90 | 6.97 | 5.21 | 3.29 | -13.38 | -17.67 | -4.68 | -1.02 | 0.74 | -4.22 | -19.33 |
| 1993 | 2.90 | 13.99 | -3.28 | 12.37 | 3.76 | 0.58 | 7.41 | 8.42 | -5.02 | 1.59 | 1.03 | 6.10 | 60.28 |
| 1992 | -14.53 | -0.90 | 4.04 | -15.10 | -0.36 | 13.04 | 11.43 | 9.18 | -8.23 | -5.42 | -4.30 | -8.15 | -21.78 |
| 1991 | -7.05 | -4.51 | 10.30 | -4.49 | -4.99 | -0.46 | -2.54 | 9.93 | 9.23 | -14.93 | 1.20 | 31.22 | 16.91 |
| 1990 | 23.45 | 5.35 | 6.11 | 6.80 | -11.23 | 3.99 | 1.37 | 2.07 | 3.76 | -0.40 | 5.44 | -1.19 | 51.55 |
| 1989 | 21.10 | -4.23 | 9.30 | 6.09 | 20.02 | 3.21 | 8.15 | -13.02 | -1.56 | -16.65 | 7.34 | -5.42 | 30.51 |
| 1988 | 0.73 | 4.34 | -6.55 | -2.47 | 3.88 | -0.56 | -1.83 | -2.65 | 1.98 | 1.92 | -0.72 | -16.70 | -18.72 |
| 1987 | 8.81 | -1.75 | 7.18 | 31.63 | -2.69 | -4.61 | 5.97 | -2.98 | 5.50 | -5.59 | 17.76 | 1.96 | 72.15 |
| 1986 | -1.50 | 24.55 | 11.93 | -5.59 | -5.98 | -13.98 | -4.20 | 12.45 | 0.64 | -2.79 | -6.18 | -0.11 | 3.56 |
| 1985 | 6.23 | 10.03 | -7.25 | -13.09 | 21.66 | -6.79 | -8.36 | -13.48 | -30.68 | 6.69 | 13.61 | 10.02 | -21.68 |
| 1984 | | | | | | | | | | | -10.95 | 18.01 | 5.09 |

PAST PERFORMANCE IS NOT NECESSARILY INDICATIVE OF FUTURE RESULTS

This Program is available only to Qualified Eligible Participants as defined by CFTC Regulation 4.7.

COMPANY PROFILE:

Dunn Capital Management ("DUNN") was founded in 1974 by William A. Dunn, PhD, a pioneer in managed futures and in the application of computer technology to portfolio management. The firm is now owned and led by President Martin H. Bergin, a longtime friend and protégé of Dr. Dunn and an executive at the company since 1997. DUNN is one of the oldest managed futures firms in the industry, and its trading programs are quantitative, statistical and 100% systematic.

PROGRAM PROFILE:

TRADING STRATEGY

WMA is a fully diversified 100% systematic medium to long-term trend following program, encompassing a portfolio of financial, energy, metal and agricultural futures markets. The WMA Program is a compounded growth strategy. The investment objective is to extract profits from up and down trends, resulting in a return stream that exhibits very low correlation with traditional asset classes.

RISK PROFILE

Currently (Jan13 - present): WMA utilizes a dynamic risk-management methodology referred to as the Adaptive Risk Profile ("ARP"), which gears exposure to current market conditions. ARP serves to establish the size of WMA's portfolio positions based on a proprietary metric that incorporates expected returns, volatility and inter-market correlations. The program's risk target varies daily and is high only when a preponderance of signals are in agreement and the correlation matrix of WMA's positions is favorable. Monthly VaR at the 99% confidence level is expected to be in the range of 8% to 22%, with an average monthly VaR of 15%. This translates into an annualized volatility of ~23% over time.

Previously: (Nov84 - Dec12): WMA targeted a static monthly VaR of 20% at the 99% confidence level. During that time (339 months), the 20% monthly loss level was penetrated 4 times, or 1.18%.

NOTES:

The sensitivity analysis presents the effect on the portfolio of a instantaneous 1% drop in the stock indices, energies or US Dollar positions held by the portfolio on the last day of the month of the report. In the case of fixed income markets the impact of an instantaneous parallel yield curve shift of 10 basis points is presented. All sensitivity analysis calculations assume inter-market correlations remain unchanged.

The Volatility Index (VIX) began trading February 1, 2016.

SWISS INVESTORS:

Certain DUNN Products are distributed in Switzerland. Hugo Fund Services SA, with registered office at 6 Cours de Rive, 1204 Geneva (www.hugofunds.ch), is the representative of such DUNN Products (the "Representative"). The paying agent in Switzerland is Banque Heritage SA. The distribution of shares in DUNN Products in Switzerland must exclusively be made to qualified investors. The place of performance and jurisdiction for shares in those DUNN Products distributed in Switzerland are at the registered office of the Representative.

PAST PERFORMANCE IS NOT NECESSARILY INDICATIVE OF FUTURE RESULTS
This Program is available only to Qualified Eligible Participants as defined by CFTC Regulation 4.7.